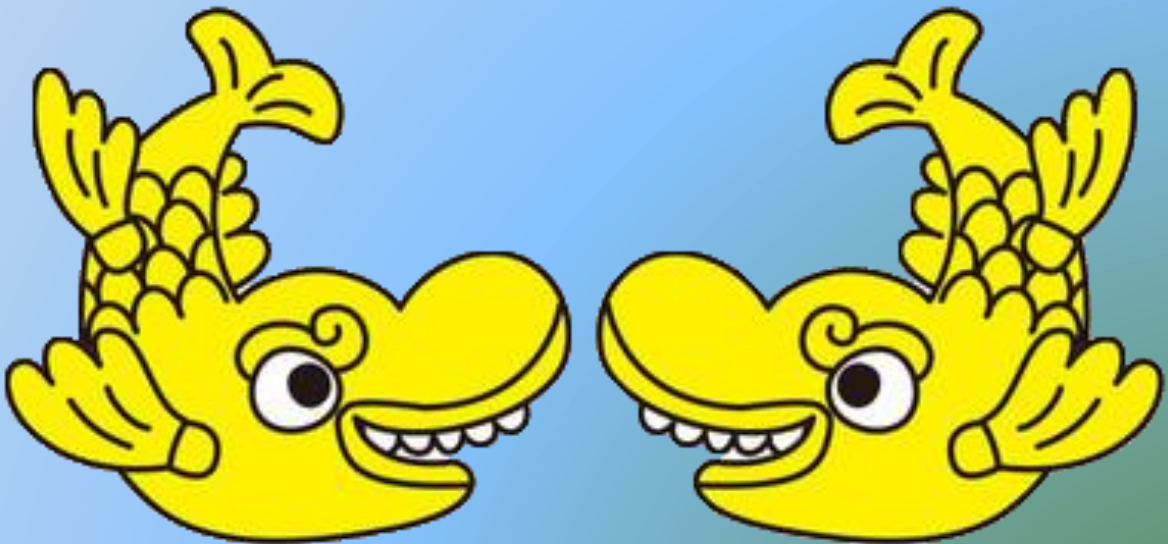


# Guide to Nagoya Cuisine

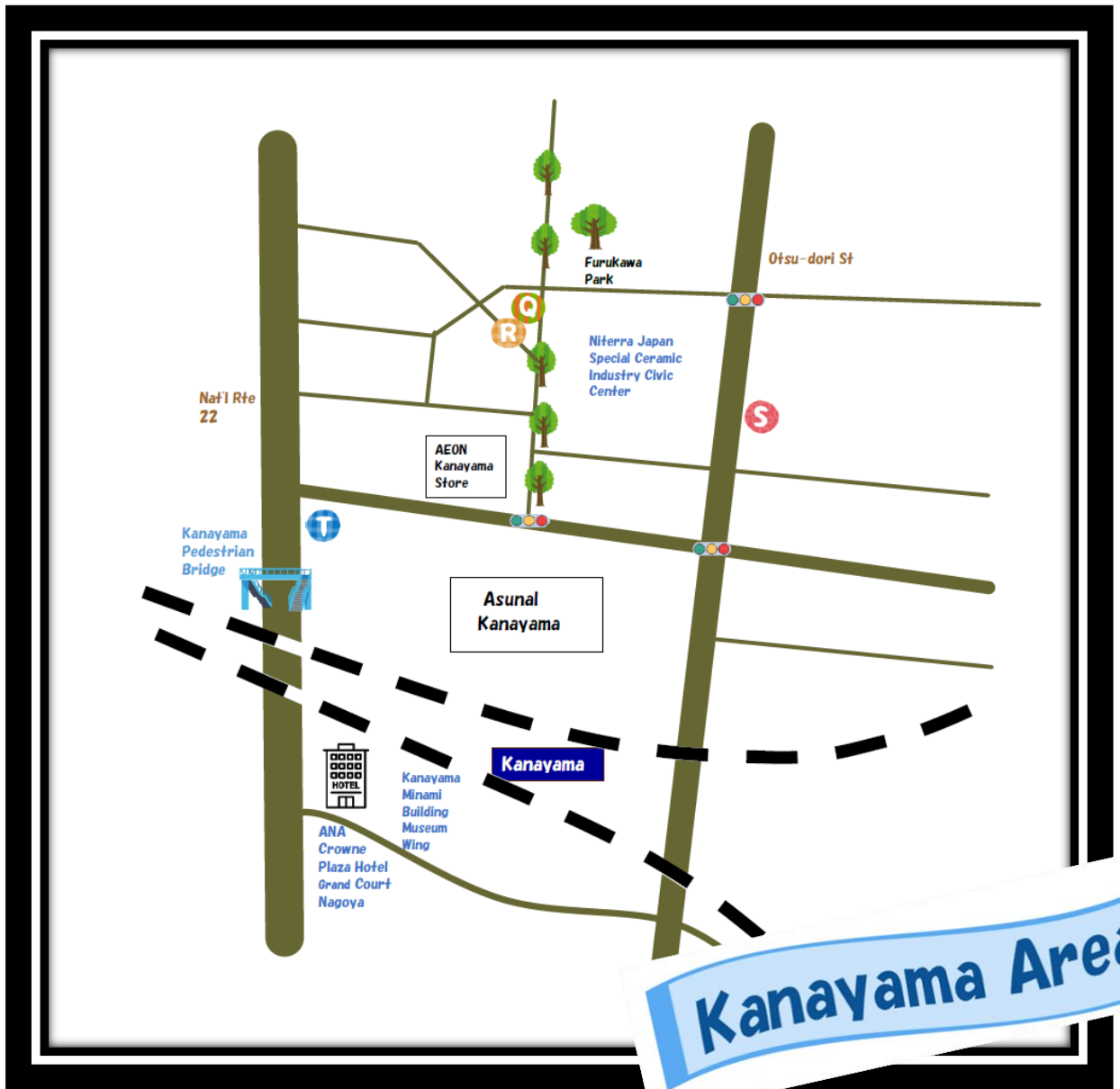
★ **Sakae Osu Area**

★ **Kanayama Area**



# Sakae Osu Area





**A** ふじ原 [Fujiwara]

**B** 串かつラフリー  
[Kushikatsuraburi]

**C** 鈴波本店 膳処  
[Suzunahonten zendokoro]

**D** 千亀 [Senkame]

**E** slow dining 金時  
[Surodainingukintoki]

**F** 梅の花 栄店 [Umenohana]

**G** 風来坊 栄店 [Fuuraibou]

**H** 世界の山ちゃん 本店  
[Sekainoyamatyan]

**I** 若鷺家 錦店 [Wakashachiya]

**J** 山本屋本店 栄店  
[Yamamotoyahonten]

**K** まるは食堂 ラシック店  
[Maruhasyokudou]

**L** 鳥開 総本家 ラシック店  
[Torikaisouhonke]

**M** みぞかつ 矢場とん 栄 松坂屋店  
[Misokatsu yabaton]

**N** あつた蓬菜軒 松坂屋店  
[Atsutahouraiken]

**O** 天むす千寿 天むす茶屋 松坂屋店  
[Temmususenjyutemmusujyaya]

**P** 地雷也 名古屋 栄地下店  
[Jiraiya]

**Q** 空 [Sora]

**R** 空ノウエ [Soranoue]

**S** 和咲日 [Wasabi]

**T** 吟醸マグロ [Ginjoumaguro]



# ふじ原 (Fujiwara)



3F WHITE MATES

1-chome-14-23 Izumi Higashi-ku Nagoya Aichi

<https://tabelog.com/en/aichi/A2301/A230103/23059862/>

Open Mon-Sat 17:30-22:00



# B 串かつラブリー (Kushikatsuraburi)



1-chome-9-1 Higashisakura Higashi-ku Nagoya Aichi

<https://tabelog.com/en/aichi/A2301/A230103/23008370/>

Open Mon-Sun 16:30-23:00(L.O.22:00)





# 鈴波本店 膳処

## [Suzunamihonten zendokoro]



3-chome-7-23 Sakae Naka-ku Nagoya Aichi

<https://tabelog.com/en/aichi/A2301/A230103/23000243/>

Open Mon-Sun 11:00-14:30



# D 千亀 (Senkame)



2F Sofuran Bldg.

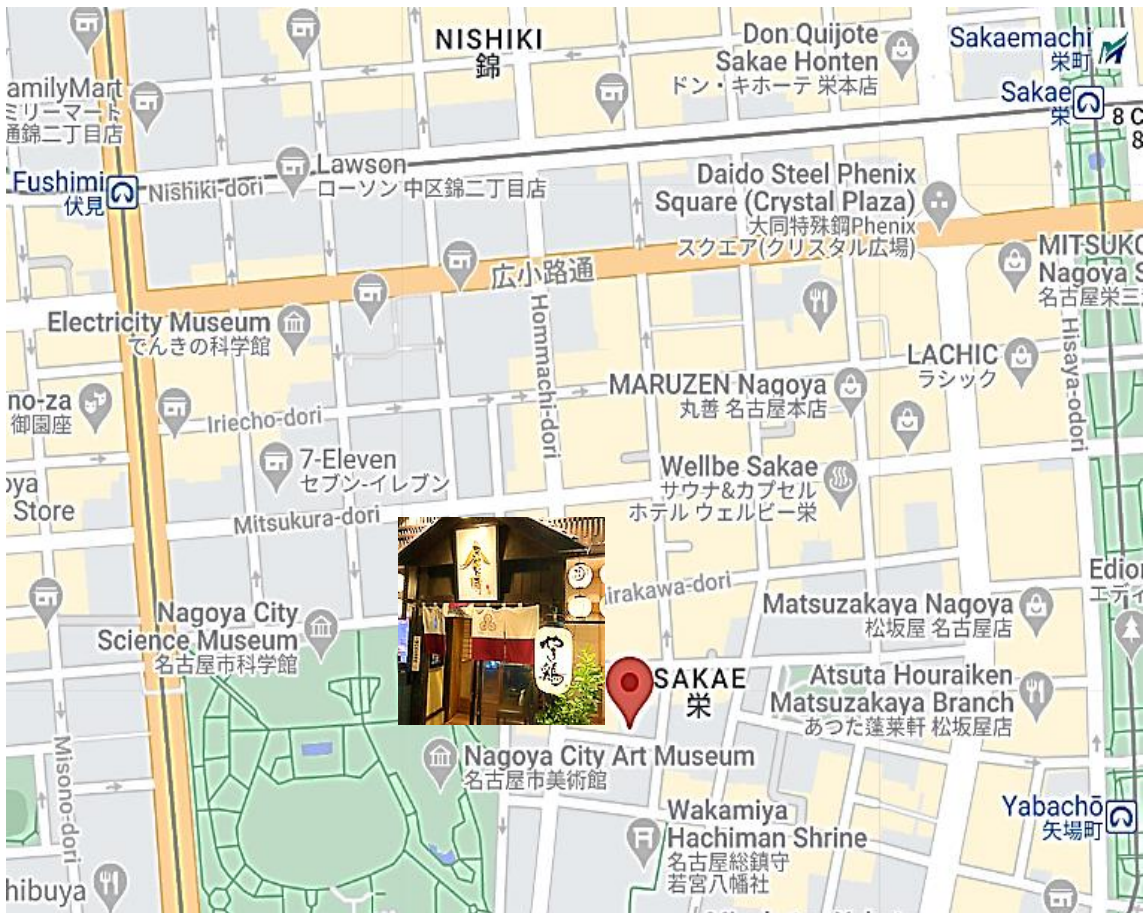
3-chome-1-19 Sakae Naka -ku Nagoya Aichi

<https://tabelog.com/en/aichi/A2301/A230103/23001704/>

Open Mon-Sat 17:00-24:00 (L.O.23:15)



# E Slow dining 金時 【Surodainingukintoki】



3-chome-21-19 Sakae Naka-ku Nagoya Aichi

<https://tabelog.com/en/aichi/A2301/A230103/23000594/>

Open Mon-Sat 18:00-24:00 (L.O. 23:00)







# 梅の花 栄店 (Umenohana)



12F Matsuzakaya Park Place Bldg.

5-chome-2-36 Sakae Naka-ku Nagoya Aichi

<https://tabelog.com/en/aichi/A2301/A230103/23000296/>

Open Mon-Fri 11:00-15:30 (L.O. 14:30), 17:00-21:30 (L.O. 20:30)

Sat /Holidays 11:00-16:00(L.O.15:00), 17:00-22:00(L.O.21:00)





# 風来坊 栄店 (Fuuraibou)



1F Eari Bldg.

4-chome-5-8 Sakae Naka-ku Nagoya Aichi

[https://tabelog.com/en/aichi/A2301](https://tabelog.com/en/aichi/A2301/A230103/23045901/)

[/A230103/23045901/](https://tabelog.com/en/aichi/A2301/A230103/23045901/)

Open 17:00-23:00 (L.O. 22:30)

Fri-Sat 17:00-24:00 (L.O. 23:30)



4-chome-9-6 Sakae Naka-ku Nagoya Aichi

[https://tabelog.com/en/aichi/A2301](https://tabelog.com/en/aichi/A2301/A230103/23001704/)

[/A230103/23001704/](https://tabelog.com/en/aichi/A2301/A230103/23001704/)

Open Mon-Fri 16:00-23:15 (L.O.22:30)

Sat 15:00-24:15 (L.O.23:30)

Sun/Holidays 15:00-23:15(L.O.22:30)



# 世界の山ちゃん 本店 (Sekainoyamatyan)





# 若鯨家 錦店 (Wakashachiya)



1F 758NISHIKI Bldg.

3-chome-12-10 Nishiki Naka-ku Nagoya  
Aichi

<https://tabelog.com/aichi/A2301/A230103/23005585/>

Open Mon-Sat 11:30-14:30,17:00-am3:00



B1F BINO SAKAE

3-chome-24-17 Nishiki Naka-ku Nagoya  
Aichi

<https://tabelog.com/en/aichi/A2301/A230103/23075871/>

Open 11:00-21:00 (L.O. 20:30)



# 山本屋本店 栄店 (Yamamotoyahonten)



# K まるは食堂 ラシック店 (Maruhasyokudou)



8F LACHIC

3-chome-6-1 Sakae Naka-ku Nagoya Aichi

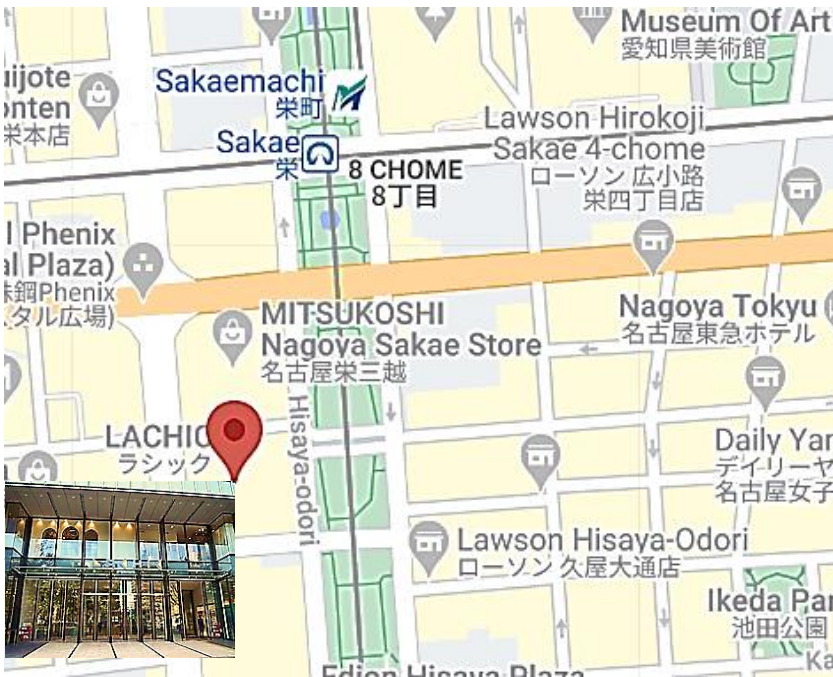
<https://tabelog.com/en/aichi/A2301/A230103/23000411/>

Open Mon-Fri 11:00-15:00 (L.O. 14:30)  
17:00-23:00 (L.O. 22:00)

Sat-Sun/Holidays 11:00-23:00(L.O.22:00)

▲ A ◀ H I ◀ FLOOR GUIDE

<https://www.lachic.jp.e.acg.hp.transer.com/nagoya/shops.html>



7F LACHIC

3-chome-6-1 Sakae Naka-ku Nagoya Aichi

<https://tabelog.com/en/aichi/A2301/A230103/23009758/>

Open Mon-Fri 11:00-15:30 (L.O. 15:00)  
17:00-21:00 (L.O. 20:00)

Sat-Sun/Holidays 11:00-23:00(L.O.20:00)

# L 鳥開 総本家 ラシック店 (Torikaisouhonke)





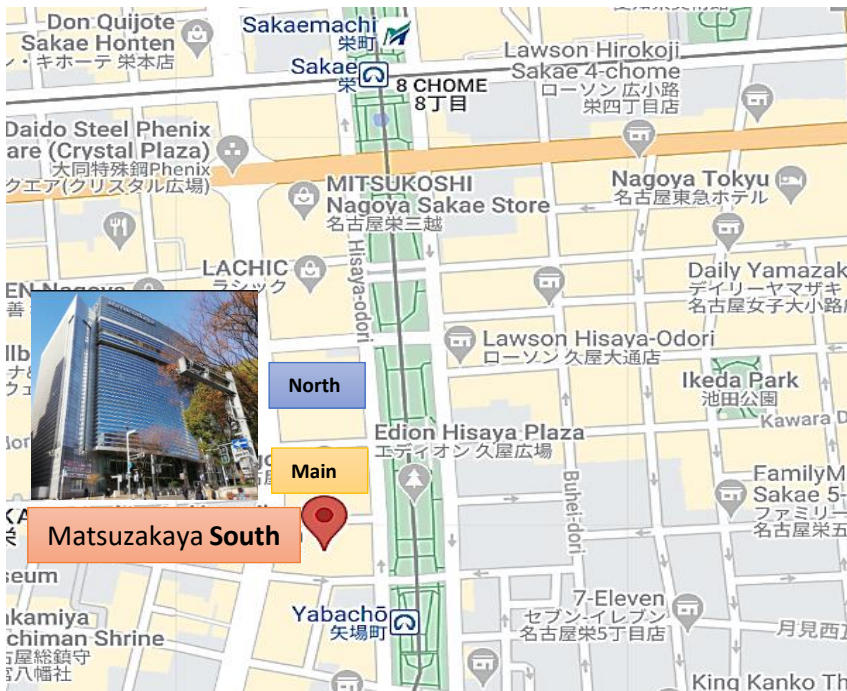
# みそかつ 矢場とん 栄 松坂屋店 [Misokatsu yabaton]



10F Matsuzakaya Nagoya South Bldg.  
3-chome-16-1 Sakae Naka-ku Nagoya Aichi  
<https://tabelog.com/en/aichi/A2301/A230103/23042338/>  
Open Mon-Fri 11:00-15:00 (L.O. 14:30)  
17:00-23:00 (L.O. 21:30)  
Sat-Sun/Holidays 11:00-22:00(L.O.21:30)

## Matsuzakaya FLOOR GUIDE

<https://www.matsuzakaya.co.jp.e.me.hp.transer.com/nagoya/floor/>



10F Matsuzakaya Nagoya South Bldg.  
3-chome-16-1 Sakae Naka-ku Nagoya Aichi  
<https://tabelog.com/en/aichi/A2301/A230103/23000108/>  
Open Mon-Fri 11:00-14:30 (L.O. 14:30)  
16:30-22:00 (L.O. 20:30)  
Sat-Sun/Holidays 11:00-22:00(L.O.20:30)



# あつた蓬菜軒 松坂屋店 [Atsutahouraiken]



# 天むす千寿 天むす茶屋 松坂屋店 [Temmususenjyu temmusujyaya]



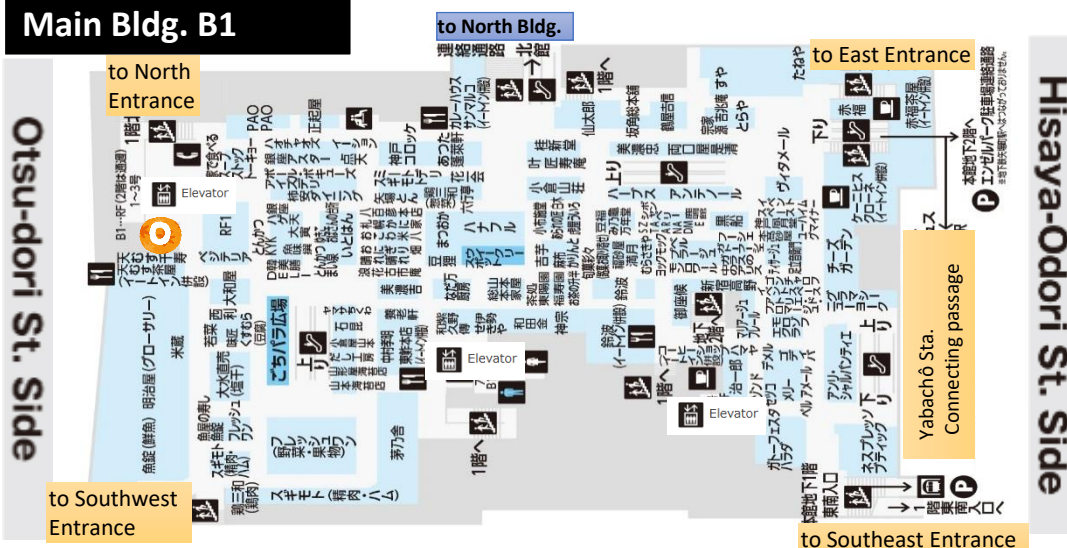
B1F Matsuzakaya Nagoya Main Bldg.  
3-chome-16-1 Sakae Naka-ku Nagoya Aichi  
<https://tabelog.com/en/aichi/A2301/A230103/23006905/>  
Open Mon-Sun 11:00-18:00 (L.O. 17:30)

## Matsuzakaya FLOOR GUIDE

<https://www.matsuzakaya.co.jp/e.me.hp.transer.com/nagoya/floor/>



## Main Bldg. B1





# 地雷也 名古屋 栄地下店 (Jiraiya)



## 森の地下街

Sakae  
Underground shopping area



Sakae Morinochikagai Minamiichibangai  
 3-chome-5-12 Sakae Naka-ku Nagoya Aich  
<https://tabelog.com/en/aichi/A2301/A230103/23000986/>  
 Open Mon-Sun 10:00-20:00



# 空 (Sora)



1F kanayamaiwase

1-chome-6-7 Kanayama Naka-ku Nagoya Aichi

<https://tabelog.com/en/aichi/A2301/A230105/23001127/>

Open Tue-Sat 17:00-23:00 (L.O. Food22:00/Drink22:30)





# R 空ノウエ (Soranoue)



2F kanayamaiwase

1-chome-6-7 Kanayama Naka-ku Nagoya Aichi

<https://tabelog.com/en/aichi/A2301/A230105/23055306/>

Open Tue-Sat 17:00-23:00 (L.O. Food22:00/Drink22:30)





# 和味日 (Wasabi)



1F Esupoakanayama

2-chome-8-4 Kanayama Naka-ku Nagoya Aichi

<https://tabelog.com/en/aichi/A2301/A230105/23008357/>

Open Mon-Sat 17:00-24:00 (L.O. 23:00)





# 吟醸マグロ 【Ginjoumaguro】



3F JG Kanayama Bldg.

1-chome-15-21 Kanayama Naka-ku Nagoya Aichi

<https://tabelog.com/en/aichi/A2301/A230105/23060249/>

Open Mon-Sat 17:00-24:00 (L.O. 23:00)

Sun/Holidays 17:00-23:00 (L.O.22:30)

