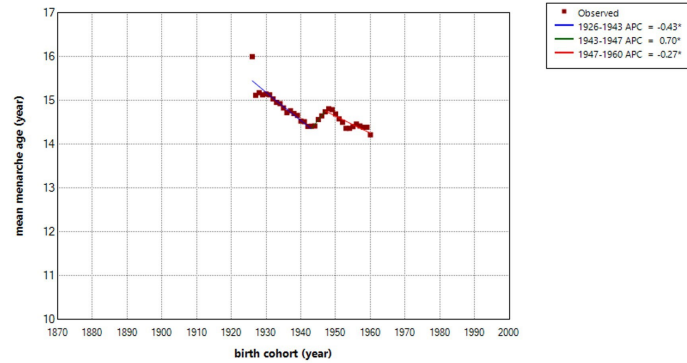


China

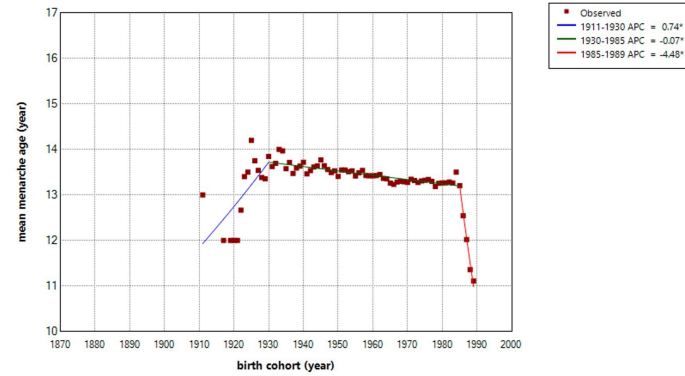
All: 2 Joinpoints



* Indicates that the Annual Percent Change (APC) is significantly different from zero at the alpha = 0.05 level.
-- Test Statistic and P-Value not available for the Empirical Quantile method.
Final Selected Model: 3 Joinpoints.

Iran

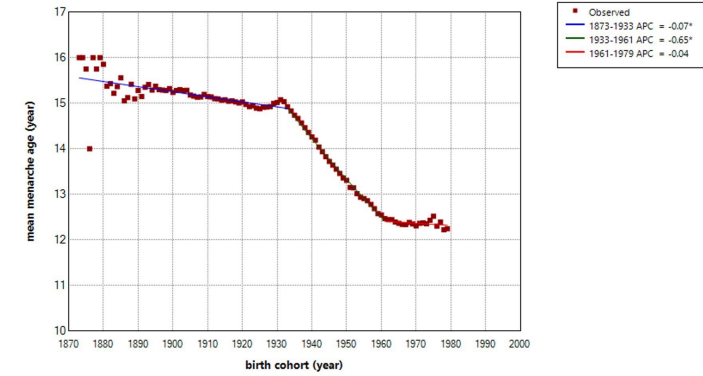
All: 2 Joinpoints



* Indicates that the Annual Percent Change (APC) is significantly different from zero at the alpha = 0.05 level.
Final Selected Model: 5 Joinpoints.

Japan

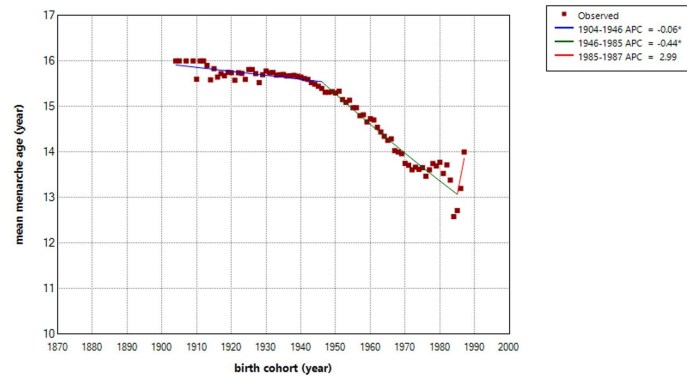
All: 2 Joinpoints



* Indicates that the Annual Percent Change (APC) is significantly different from zero at the alpha = 0.05 level.
Final Selected Model: 5 Joinpoints.

Korea

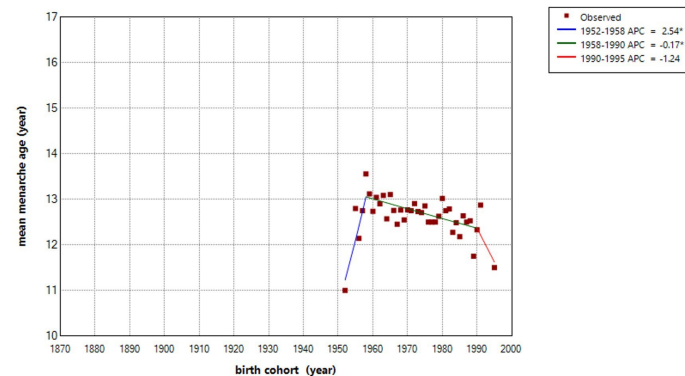
All: 2 Joinpoints



* Indicates that the Annual Percent Change (APC) is significantly different from zero at the alpha = 0.05 level.
Final Selected Model: 5 Joinpoints.

Malaysia

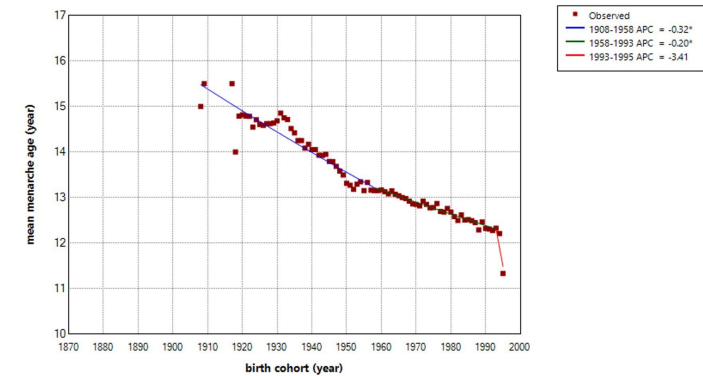
All: 2 Joinpoints



* Indicates that the Annual Percent Change (APC) is significantly different from zero at the alpha = 0.05 level.
Final Selected Model: 1 Joinpoint.

Singapore

All: 2 Joinpoints



* Indicates that the Annual Percent Change (APC) is significantly different from zero at the alpha = 0.05 level.
Final Selected Model: 3 Joinpoints.